

Pad printed thick-film transducers for focused, high frequency, high-power applications

Wanda W. Wolny^a, Jeffrey A. Ketterling^b, Franck Levassort^c, Rasmus Lou. Moeller^a, Erwan Filoux^b, Louis-Pascal Tran-Huu-Hue^c, Jonathan Mamou^b, Ronald H. Silverman^{b,d} and Marc Lethiecq^c

^a Meggitt - Ferroperm Piezoceramics, Hejreskovvej 18A, DK-3490 Kvistgaard, Denmark

^b Lizzi Center for Biomedical Engineering, Riverside Research, 156 William St., New York, NY, USA 10038

^c François-Rabelais University of Tours, UMRS Imagerie & Cerveau, INSERM U930, CNRS ERL 3106, 10 boulevard Tonnellé, 37032 Tours cedex 1, France

^d Department of Ophthalmology, Harkness Eye Institute, Columbia University Medical Center, 160 Fort Washington, New York, NY, USA 10032

Fabrication

The basic structure of the transducer is depicted in Figure 1a and a cross section of the active structure is seen in Figure 1b. Top and bottom electrodes and the active film were deposited using pad printing on the curved face of the cylinder and contact electrodes were added along the side of the cylinder using screen-printing. A thorough description of the manufacturing method can be found in [1].

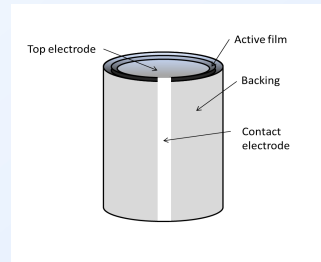


Figure 1a

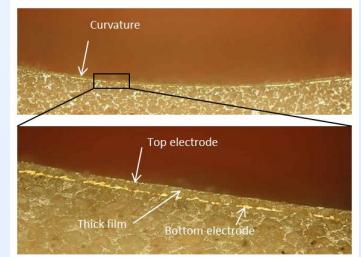


Figure 1b

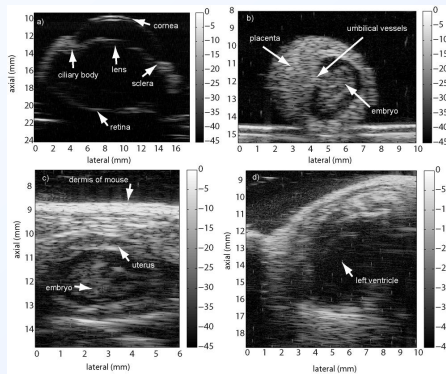


Figure 2

Acoustic pressure measurements in high power using a hydrophone (Figure 3).

The piezoelectric thick-film transducer delivered high-pressure values over 3 MPa for an input voltage of 140 Vpp and a fairly linear pressure versus voltage curve with no saturation was observed (Figure 4). Considering that the thickness of the film was around 30 μm , the corresponding electrical field was around 5 kV/mm.

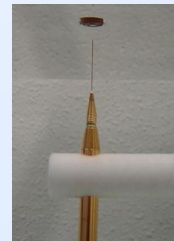


Figure 3

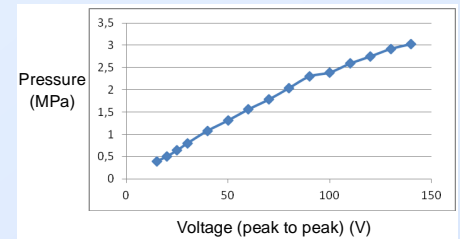


Figure 4

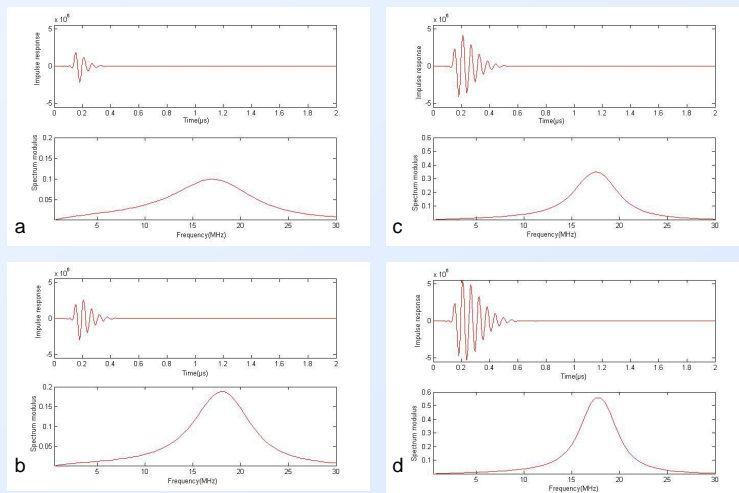


Figure 5. Pulse-echo impulse response and spectrum of:

- a reference transducer (designed for Imaging). Bandwidth 60%, efficiency 11%.
- a transducer with high porosity backing and standard rear electrode. Bandwidth 37%, efficiency 15%.
- a transducer with standard backing and thick rear electrode. Bandwidth 31%, efficiency 23%.
- a transducer with high porosity backing and thick rear electrode. Bandwidth 25%, efficiency 31%.

Simulation

In order to further explore the potential of such thick-film structures for combined imaging and therapy applications, the intrinsic performance of four transducer structures have been simulated using a KLM-based model (Fig 5). The impulse response in pulse-echo mode and its frequency domain curve were calculated as well as the efficiency in transmit mode. The efficiency is defined as the total acoustic power generated by the transducer in water divided by the input electrical power. Configurations were defined by using two backings, i.e. one is the current material, the other is a higher porosity ceramic with an acoustic impedance of 10 MRa. The thickness of the gold back electrode was either around 4 micrometers or larger around 15 micrometers.

Conclusion

In conclusion, piezoelectric thick-film structures on porous ceramic substrates, which have proven to be well adapted to high resolution imaging applications, can be optimised for therapy applications through changes of substrate porosity and back electrode thickness. Some of the configurations explored in this simulation study could lead to devices that would operate with satisfactory performance in both applications, i.e. lower but still acceptable axial resolution combined with higher efficiency as compared to the reference device. Such a transducer will be fabricated in the near future.

References

- [1] F. Levassort, E. Filoux, R. Lou-Møller, E. Ringgaard, M. Lethiecq, A. Nowicki, Curved piezoelectric thick films for high resolution medical imaging, IEEE International Ultrasonics Symposium, 2361-2364 (2006).